



MARI STATE UNIVERSITY

МАРИЙСКИЙ
ГОСУДАРСТВЕННЫЙ УНИВЕРСИТЕТ



Yoshkar-Ola is the capital of Mari El Republic,
a multi-national city welcoming students
from all over the world. Yoshkar-Ola
is «the pearl of Volga region»

**MARI STATE
UNIVERSITY**



**THE UNIVERSITY CAMPUS
IS LOCATED IN THE CITY CENTER**





Moscow

Yoshkar-Ola
Kazan

Mari State University

EASY TO REACH



MARI STATE UNIVERSITY IS A MULTI-FIELD UNIVERSITY

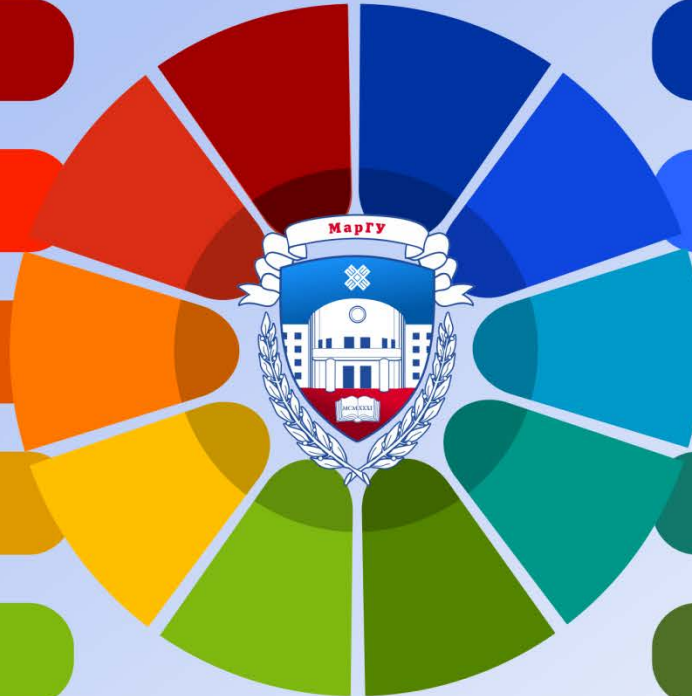
MEDICINE

PEDAGOGICS

JURISPRUDENCE

**HUMANITARIAN
SCIENCES**

CULTURE AND ART



**AGRICULTURAL
SCIENCES**

**ECONOMICS AND
MANAGEMENT**

**PHYSICS AND
MATHEMATICS**

**ENGINEERING
SCIENCES**

NATURAL SCIENCES



Марийский государственный университет

PREPARATORY DEPARTMENT OF RUSSIAN LANGUAGE

More than **120**
graduates yearly

Pre-university programs:

- **Engineering and technical program**
- **Medical-biological program**
- **Natural sciences**
- **Humanitarian program**
- **Economical program**



STUDY PROGRAMS IN ENGLISH

1

GENERAL MEDICINE

2

PHARMACY

3

ELECTRICAL POWER ENGINEERING





MEDICAL RESIDENCY

- **RADIOLOGY**

- **GERIATRICS**

- **OBSTETRICS
AND GYNECOLOGY**

- **PSYCHIATRY**

- **THERAPY**

- **ANESTHESIOLOGY-
REANIMATOLOGY**

- **ONCOLOGY**

- **TRAUMATOLOGY
AND ORTHOPEDICS**

- **HEALTH ORGANIZATION
AND PUBLIC HEALTH**

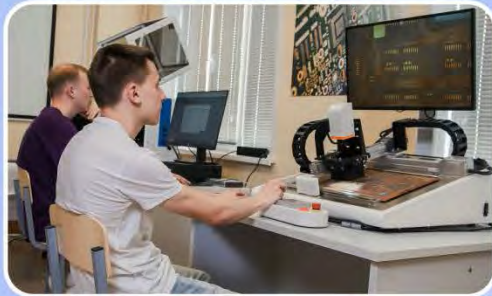
- **MANAGEMENT
AND ECONOMICS
OF PHARMACY**



Mari State University



NATURAL SCIENCE



**Ecology and Management
of the Environment
and Natural Resources**
(bachelor and master programs)

Biology/Biomedicine

Chemistry

**Electrical Power
Engineering**

**Mari State University welcomes any partnerships
in network program development**



BIOMEDICINE

LABORATORY OF PHARMACOLOGICAL RESISTANCE



GENOME EDITING LABORATORY

SYNTHESIS AND TESTING OF NEW COMPOUNDS AGAINST DIABETES, ONCOLOGY, AND ORPHAN DISEASES

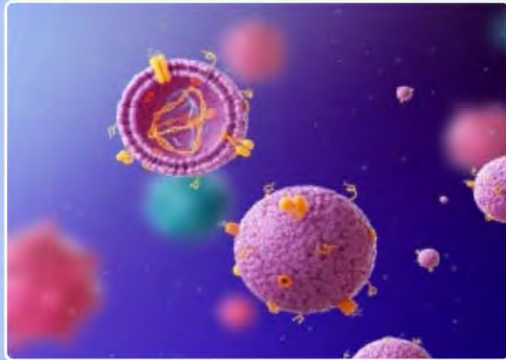
Based on natural compounds of plant origin (triterpene acids) and the mitochondria-targeted motif - **F16**, a **spectrum of molecules with activity against various types of cancer cells was created and tested.**

New approaches to the treatment of diabetes mellitus and Duchenne muscular dystrophy have been developed, based on the correction of mitochondrial dysfunction.

Joint research is being carried out with Prof. Jiankang Liu, University of Health and Rehabilitation Sciences; Qingdao City, Shandong Province



BIOMEDICAL SCIENTIFIC SCHOOLS



Research of the molecular mechanisms of mitochondrial dysfunction in cardiac and skeletal muscles during development



Research of mitochondria-related molecular mechanisms of the pathogenesis of the type II diabetes mellitus and accompanying cardio- and myopathies



Integratively regularized methods for approximating of quasi-solutions of irregular nonlinear operator equations and inverse problems of ultrasound medical diagnostics



ELECTRICAL POWER ENGINEERING

**LABORATORY OF
ELECTRICAL INSTALLATION
AND CONSTRUCTION OF
LOW-VOLTAGE ELECTRICAL
EQUIPMENT**



**Load leveling devices
for three-phase
distribution networks
0.4 kV**

mass production

Leveling the phase loads of the electrical network among themselves by switching consumers from a more loaded phase to a less loaded one without changing or with the possibility of changing the original phase rotation order, depending on the type of connected load in order to reduce power losses and improve power quality parameters



ARTIFICIAL INTELLIGENCE AND HIGH PERFORMANCE COMPUTING



MarSU Mobile Apps

are the silver winners in the personal accounts category of the **Tagline Awards** Digital competition



My MarSU

MarSU:
Teacher's
Personal Account

the **6th** place

among Russian universities



digital pedagogy



digital agriculture



digital energy



digitalization of languages



digital medicine



digital economy



digital law

Mari State University



AGRICULTURE



**Study
programs**

**and scientific
research**

Mari State University



PEDAGOGICS AND LINGUISTICS

Teacher Training

Linguistics

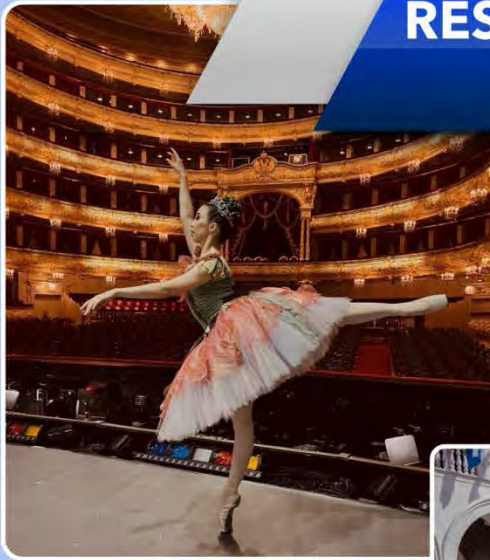
International Relations

**in close cooperation
with practical
training bases**





RESEARCH IN THE FIELD OF HUMANITIES AND SOCIAL SCIENCES



world
and national culture:
axiological paradigm



quality management
of professional training of teachers



archeology and ethnology
of the Volga region



Mari literature and comparative
literature

active processes in language
and communication in the digital
and information era

social and pedagogical rehabilitation
of children with disabilities

folkloristics at the turn
of the 20th - 21st centuries



Mari State University

WHY STUDENTS CHOOSE MarSU



- Highly developed infrastructure and scientific base for research activities
- Welcoming multi-national environment
- Adaptation and integration programs for international students
- Study programs in English and Russian
- Preparatory department
- Partnership links with universities all over the world
- Participation of foreign students in extra-curricular activities, memorable cultural events, participation in interesting university projects



Mari State University

CONTACT DETAILS



Rector



+7 (8362) 688-002



rector@marsu.ru

International Department



+7 (8362) 688-042



inter_office@marsu.ru

